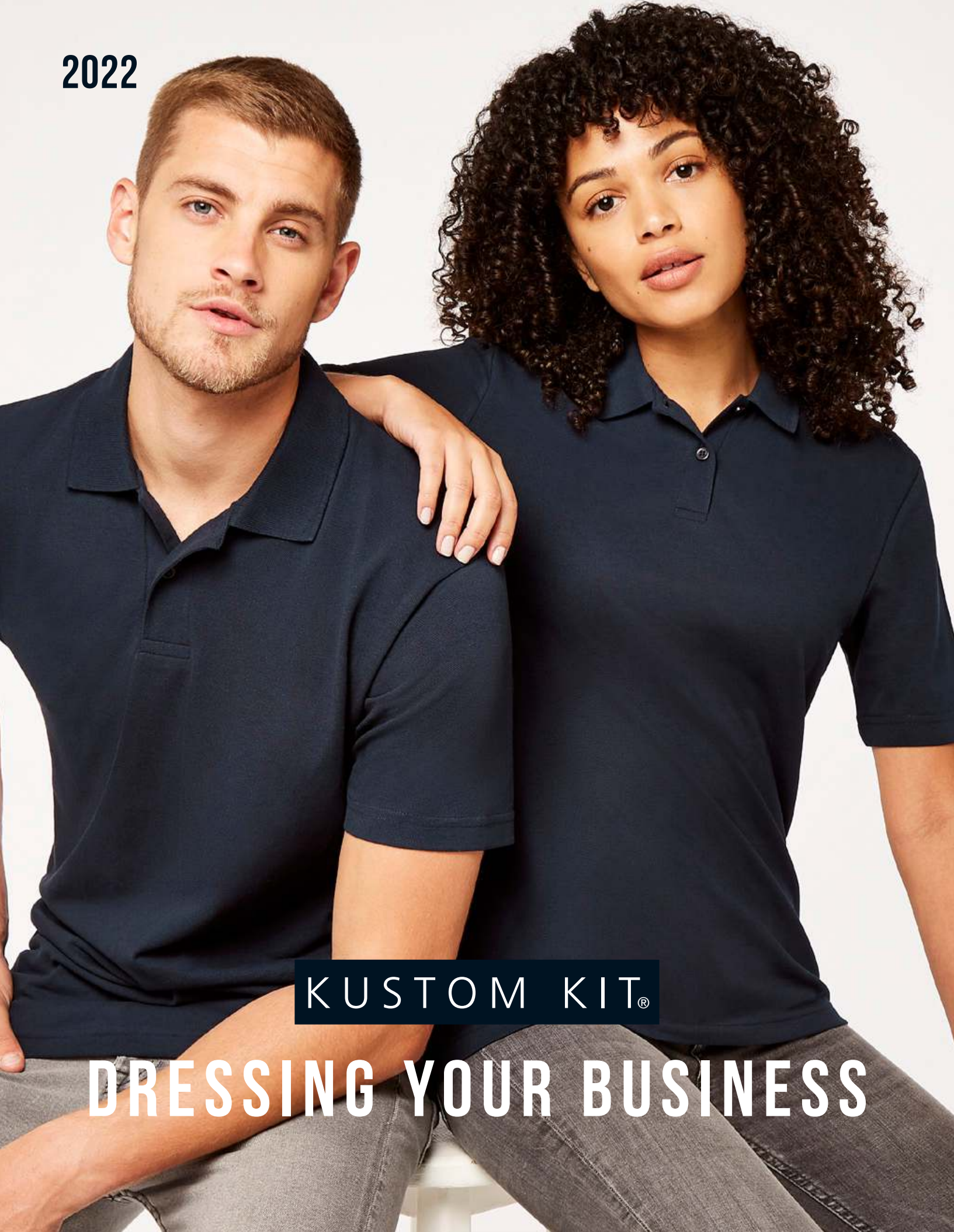


2022



KUSTOM KIT[®]

DRESSING YOUR BUSINESS

DRESSING YOUR BUSINESS



KUSTOM KIT®

For many, the workplace has changed significantly over the past two years. We have been forced to look again at our working practises with more widespread adoption by business of both hybrid working and working from home policies.

Of course, changing the way we work may also affect our choices in staff uniform but whether you're now working from home or have returned to a regular place of work, creating an identity and a sense of belonging for your team through uniform has never been more important.

This look book features just a small selection from our diverse 2022 collection and we hope it will bring you some inspiration in choosing your new uniform.

**BUY
LESS
BUY
BETTER
BUY
KUSTOM KIT**

We only manufacture quality garments that are built to last! As part of Kustom Kit's sustainability strategy, we believe that well-made, ethically sourced garments are the most important interventions we can make to slow down material flow and reduce overconsumption, while also addressing environmental changes. That's why our designers consider all aspects of garment construction to ensure that greater longevity and exceptional value are inherent across the Kustom Kit range.



kustomkituk



kustom_kit

[kustomkit.com](https://www.kustomkit.com)

THE KLASSIC POLO



KK403 Men's
KK703 Women's



THE ORIGINAL
KUSTOM KIT POLO.
OFFERING THE
WIDEST CHOICE OF
COLOURS AND
SIZES, OUR KLASSIC
POLO IS RENOWNED
FOR ITS SUPERIOR
QUALITY AND
SUPERWASH® 60
PERFORMANCE.

- White
- Canary*
- Lime
- Apple Green
- Kelly Green*
- Bottle Green*
- Pink
- Burnt Orange*
- Red
- Raspberry
- Magenta
- Burgundy*
- Purple
- Dark Purple
- Light Blue
- Mid Blue*
- Royal
- Turquoise
- Jade
- Navy
- Heather Grey
- Charcoal
- Graphite
- Chocolate*
- Black

*KK403 only

SIZES: KK403 XS - 6XL

4XL & 5XL in white, red, lime, turquoise, graphite, bottle green, royal & charcoal only.

6XL in black & navy only. All other colours XS - 3XL.

KK703 6 - 24

24 in black, turquoise, navy & raspberry only. All other colours 6 - 22.

See page 41 for full size spec and European sizing.

FABRIC: 65% polyester 35% cotton pique.

WEIGHT: 185gsm.

FEATURES: 1x1 flat knit collar and cuffs. Taped back neck. Three button placket with slanted top. Taped shoulder seams. Half moon yoke. Side vents. Spare button.

Please note: Superwash 60°C wash can only be guaranteed on non-decorated garments.



KLASSIC SLIM FIT POLO

KK413 Men's · KK213 Women's

- White
 - Graphite*
 - Black
 - Turquoise*
 - Navy
- *KK413 only



SIZES: KK413 XXS - 2XL KK213 6 - 16. See page 41 for full size spec and European sizing.

FABRIC: 65% polyester 35% cotton pique.

WEIGHT: 185gsm.

FEATURES: 1x1 rib flat knit collar and cuffs. Taped back neck. Narrow three button slanted top placket. Taped shoulder seams. Side vents. Spare button.

Please note: Superwash 60°C wash can only be guaranteed on non-decorated garments.

IDEAL FOR WORKWEAR, EVENTS
AND ACTIVEWEAR WITH A STRONG
CHOICE OF COLOUR WAYS TO MATCH
YOUR CORPORATE ID.



KK475 TRACK POLO

CLASSIC
FIT

- Orange/Graphite 
- Red/Black 
- Navy/Light Blue 
- Navy/Turquoise 
- Navy/Royal 
- Navy/Red 
- Navy/Mid Yellow 
- Black/Yellow 
- Black/Gold 
- Black/Orange 
- Black/Red 
- Black/Purple 
- Black/Royal 
- Black/Lime 
- Black/Grey 

SIZES: XXS - 3XL XXS & XS in black/gold, black/orange, black/red, black/grey, black/royal, black/lime & navy/light blue only.
See page 41 for full size spec and European sizing.

FABRIC: 65% polyester 35% cotton pique.

WEIGHT: 200gsm.

FEATURES: 1x1 rib flat knit collar. Contrast taped back neck. Contrast side seams and underarms with white piping detail. Open sleeves. Taped shoulder seams. Half moon yoke. Three button slanted placket. Contrast side vents. Spare button.



WORKFORCE POLO

KK422 Men's · KK722 Women's

- White
 - Dark Grey Marl
 - Charcoal*
 - Black
 - Turquoise*
 - Royal
 - Navy
 - Lime*
 - Bottle*
 - Red*
- *KK422 only

SIZES: KK422 XS - 5XL
 KK722 8 - 20.
 See page 41 for full size spec and European sizing.

FABRIC: 50% cotton
 50% polyester pique.

WEIGHT: 200gsm.

FEATURES: 1x1 rib knit collar. Two button placket. Straight top placket. Self fabric taped back neck. Twin needle hem and cuff.



MADE FROM 50/50
 POLY/COTTON THIS
 BREATHABLE
 FABRIC OFFERS
 MAXIMUM
 COMFORT AND
 SUPERIOR WASH
 PERFORMANCE.



ST. MELLION POLO

KK606 Men's · KK706 Women's



-  White/Bright Red
-  White/Navy
-  Light Blue/White
-  Navy/White
-  Navy/Light Blue
-  Navy/Sun Yellow
-  Black/White*
-  Black/Yellow*
-  Black/Lime*
-  Black/Bright Red*

*KK606 only

THE USE OF CONTRAST
TIPPING AND INNER
PLACKET SETS THIS
100% COTTON POLO
APART FROM THE REST.

CLASSIC
FIT

100%
COTTON

SIZES: KK606 XS - 2XL KK706 8 - 20.

See page 41 for full size spec and European sizing.

FABRIC: 100% combed cotton pique.

WEIGHT: 210gsm.

FEATURES: 1x1 rib flat knit collar and cuff with contrast stripe.





Three button slanted top placket. Contrast inner placket.

Taped shoulder seams. Contrast taped back neck and side vents.

Spare button. KK606 - Horn effect buttons. KK706 - Pearl effect buttons.

KK455 COOLTEX® PLUS MICRO MESH POLO



- White 
- Navy 
- Graphite 
- Black 

COOLTEX® PLUS
 Our Cooltex® Plus fabric is knitted from multi-channel fibres that speed moisture to the outer surface, maximising evaporative and cooling performance. This high tech fabric allows the body to regulate its core temperature to keep the wearer cool and comfortable whatever the activity.



SIZES: XS - 3XL See page 41 for full size spec and European sizing.









FABRIC: 100% Cooltex® Plus polyester micro mesh.

WEIGHT: 140gsm.

FEATURES: 1x1 rib knit collar. Three button straight top placket. Self fabric taped back neck Double stitched armholes. Twin needle hem and cuff.

KK555 COOLTEX® PLUS MICRO MESH TEE



- White 
- Heather Grey Solid 
- Graphite 
- Black 
- Bright Blue 
- Navy 
- Red 
- Bottle Green 



SIZES: XS - 4XL 4XL in black graphite, navy & white only. See page 41 for full size spec and European sizing.

FABRIC: 100% Cooltex® Plus polyester micro mesh.

WEIGHT: 140gsm.

FEATURES: 1x1 rib crew neck. Self fabric back neck and shoulder tape. Top stitched front neck trim. Twin needle hem and cuff.

- White
- Heather Grey
- Charcoal
- Graphite
- Black
- Turquoise
- Electric Blue
- Royal
- Navy
- Lime
- Red

KK400 WORKWEAR POLO

SIZES: XS - 5XL.
4XL & 5XL in black, navy & white only
See page 41 for full size spec and European sizing.

FABRIC: 65% polyester 35% cotton pique.

WEIGHT: 180gsm.

FEATURES: 1x1 rib flat knit collar and cuffs. Taped back neck. Slanted placket top. Three horn effect buttons. Taped shoulder seams. Spare button.

Please note: Superwash 60°C wash can only be guaranteed on non-decorated garments.



KK806 WORKWEAR TROUSERS

SIZES:
28 - 46" waist
S R L leg lengths
See page 41 for full size spec and European sizing.

FABRIC:
65% polyester
35% cotton canvas Teflon® coated.

WEIGHT:
260gsm.

FEATURES:
Two side pockets. Phone pocket with hook & loop fastening flap suitable for modern smartphones. Large multi compartment pockets to legs with hook & loop fastened flaps. Two back pockets, one with hook & loop fastened flap. All pocket flaps have tape pullers. Double layered fabric to seat. Hidden internal pockets for knee pads. Metal zip and button fly. Belt loops with extra key loop.



Black





FASHION FIT TEE

KK504 Men's

KK754 Women's

- White 
 - Light Grey Marl 
 - Dark Grey Marl 
 - Black Melange* 
 - Black 
 - Turquoise Marl* 
 - Royal* 
 - Denim Marl* 
 - Navy 
 - Red* 
 - Khaki* 
- *KK504 only

SIZES: KK504 XS - 3XL
KK754 8 - 18.
See page 41 for full size spec and European sizing.

FABRIC: 65% polyester
35% cotton (black melange
50% polyester 50% cotton).
WEIGHT: 160gsm.

FEATURES: 1x1 ribbed crew neck. Self fabric back neck and shoulder tape. Twin needle hem and cuffs.

Please note: Superwash 60°C wash can only be guaranteed on non-decorated garments.



THESE SUPERWASH[®] 60° T-SHIRTS ARE CRAFTED FROM A COMBINATION OF POLYESTER AND RING SPUN COTTON TO PROVIDE MAXIMUM COMFORT AND LONGEVITY.



KK500 HUNKY® TEE

- White
- Light Sand **NEW**
- Heather Grey **NEW**
- Navy
- Black

SIZES: S - 6XL
 4XL, 5XL & 6XL in black, navy & white only
 See page 41 for full size spec and European sizing.
FABRIC: 100% combed cotton single jersey.
 (heather grey - 90% cotton 10% viscose)
WEIGHT: 180gsm.
FEATURES: Superior printing surface.
 Taped reinforced shoulder seams. 1x1 rib neck.
 Taped back neck.



KK508 FASHION FIT RINGER TEE

SIZES: XS - 2XL.
 See page 41 for full size spec and European sizing.
FABRIC: 65% polyester 35% cotton
WEIGHT: 160gsm.
FEATURES: Self coloured, self fabric back neck and shoulder tape. Twin needle hem. 1x1 ribbed folded neck and cuff in contrast colour. Back neck binding.

- White/Black
- Light Grey Marl/Black
- Red/White
- Navy/White
- Black/White



KK302 SWEATSHIRT

- Dark Grey Marl
- Navy
- Black

SIZES: XS - 4XL.
See page 41 for full size spec and European sizing.

FABRIC: 65% polyester 35% cotton brushed back jersey.

WEIGHT: 280gsm.

FEATURES: Self coloured tape to back neck. Self fabric double layered cuff and welt. Tear out back neck label.

Please note: Superwash 60°C wash can only be guaranteed on non-decorated garments.



KK303 ZIPPED HOODIE



- Navy
- Dark Grey Marl
- Black



SIZES: XS - 3XL See page 41 for full size spec and European sizing.

FABRIC: 65% polyester 35% cotton brushed back jersey.


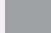

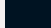
WEIGHT: 280gsm.

FEATURES: Full front zip. Self fabric lined hood. Self fabric double layered cuff and welt. Flatlock seaming detail. Brushed silver metal hardware. Flat tape cord through hood, channel finished with metal eyelets. Double pocket to centre front. Taped shoulder.

Please note: Superwash 60°C wash can only be guaranteed on non-decorated garments.

KK333 HOODIE



- White 
- Bottle 
- Burgundy 
- Navy 
- Heather Grey 
- Dark Grey 
- Graphite 
- Black 



SIZES: XXS - 4XL (4XL black, dark grey and navy only) See page 41 for full size spec and European sizing.

FABRIC: 80% cotton 20% polyester brushed back Jersey .

WEIGHT: 280gsm.

FEATURES: Self colour jersey lined hood. Jersey binding to back neck. Taped shoulders. Self fabric full needle rib double layered cuff and welt. Flat lace drawcord running through hood. Central kangaroo pocket with double stitching.

NEW

KK335 1/4 ZIP SWEATSHIRT

- Dark Grey 
- Navy 
- Black 

SIZES: XS - 2XL.

See page 41 for full size spec and European sizing.

FABRIC: 80% cotton 20% polyester.

WEIGHT: 280gsm.

FEATURES: Cadet collar. Covered zip for enhanced printability. Full needle ribbed welt and cuff. Self colour woven tape to inside neck and back of zip. Double layered collar.





THE LONG SLEEVE OXFORD IS A STAPLE GARMENT WITHIN THE CORPORATE COLLECTION. IT'S TIMELESS DESIGN GIVES A SMART AND CONSISTENT STYLE ACROSS THE TEAM.

PREMIUM OXFORD SHIRT

LONG SLEEVE

- White
- Silver Grey
- Charcoal*
- Light Blue
- Royal
- Midnight Navy*
- Bottle Green*
- Red*
- Black

*KK105 only



SIZES: KK105 13.5 - 23" collar 13.5 & 14" available in white and light blue only. All other colours available to order.

KK702 6 - 28 6 available in black, white and light blue only. All other colours available to order. See page 41 for full size spec and European sizing.

FABRIC: 85% mercerised cotton 15% polyester Oxford.

WEIGHT: 125gsm.

FEATURES: KK105 - Button down, fused stand up collar. Centre back pleat. Rounded hem. Chest pocket. Buttoned cuff placket. One button adjustable cuff with cufflink option. Spare buttons. KK702 - Regular fused stand up collar. Rounded hem. Princess seaming to front and back. Three button cuff. Spare buttons.

SIZES: KK351 13.5 - 23" collar
13.5 & 14" available in white and light blue only. All other colours available to order.

KK361 6 - 28 6 available in white and light blue only. All other colours available to order.

See page 41 for full size spec and European sizing.

FABRIC: 70% mercerised cotton
30% polyester Oxford.

WEIGHT: 135gsm.

FEATURES: Fused stand up collar. Rounded hem. Spare buttons. KK351 - Button down collar. Buttoned cuff placket. Chest pocket. Two pleats at back. One button adjustable cuff.

KK361 - Regular collar. Two darts to front and back. Two button cuff.

KK351

CLASSIC FIT

KK361

TAILORED FIT

EASY IRON

50° WASH

White

Light Blue

French Navy

Black

A COMFORTABLE YET HARD WEARING COTTON RICH LONG SLEEVE OXFORD SHIRT. HIGHLY FUNCTIONAL FEATURES INCLUDE EASY IRON PROPERTIES AND THE ABILITY TO BE WASHED AT 50°C.

WORKWEAR OXFORD SHIRT

LONG SLEEVE





- White
- Light Grey
- Graphite
- Black
- Light Blue
- Dark Navy
- Claret
- Purple



POPLIN SHIRT

SHORT SLEEVE KK141 Men's · KK241 Women's

LONG SLEEVE KK142 Men's · KK242 Women's



SIZES: KK141 KK142 13.5 - 23" collar 13.5 & 14" available in white and black only. All other colours available to order. KK241 KK242 6 - 28 See page 41 for full size spec and European sizing.

FABRIC: 65% polyester 35% cotton poplin.

WEIGHT: 105gsm.

FEATURES: Fused semi cutaway collar. Rounded hem. Spare button. Front and back darts (KK241, KK242). Adjustable two button cuff with pointed no button cuff placket. (KK142, KK242). Option for cufflinks (KK142). Chest pocket (KK141, KK142).

KK182 Men's · KK782 Women's

PERFECT FOR
COMFORT,
MOVEMENT AND
FLEXIBILITY



STRETCH OXFORD SHIRT

-  Light Blue
-  White

SIZES: KK182 13.5 - 18.5" collar KK782 6 - 20
See page 41 for full size spec and European sizing.

FABRIC: 58% cotton 39% polyester 3% Lycra.

WEIGHT: 143gsm.

FEATURES: KK182 Fused stand up button down collar. Two darts at back. Rounded hem. Back yoke. Two button cuff with buttoned cuff placket. Spare buttons. KK782 Fused stand up collar. Two darts at back. Two bust darts to the front. Rounded hem. Back yoke. Adjustable cuff with buttoned cuff placket. Spare button.

KK182

KK782



KK755 KEYHOLE NECK CORPORATE TOP



White
Black

REGULAR FIT STRETCH

SIZES: 8/10 - 20/22 See page 41 for full size spec and European sizing.

FABRIC: 95% cotton 5% elastane.

WEIGHT: 200gsm.

FEATURES: Keyhole mandarin neck. Elastane fabric for enhanced fit. Shaped side seams. Straight hem.

KK770 MANDARIN COLLAR CORPORATE TOP



White
Black

REGULAR FIT STRETCH

SIZES: 8/10 - 20/22 See page 41 for full size spec and European sizing.

FABRIC: 95% cotton 5% elastane.




WEIGHT: 200gsm.

FEATURES: V neck mandarin neck. Elastane fabric for enhanced fit. Shaped side seams. Straight hem.



ARUNDEL SWEATER

OUR MOST POPULAR
SWEATER. COMBINING
A VERSATILE FINE GAUGE
KNIT WITH SMART DURABILITY.

-  Graphite*
-  Navy
-  Black

*KK352 only

SIZES: KK352 XXS - 3XL KK353 6 - 20 See page 41 for full size spec and European sizing.

FABRIC: 50% cotton 50% acrylic.

WEIGHT: 12 gauge.

FEATURES: Tubular linked mitred V neck. 1x1 rib cuffs and welt.
Fully fashioned armholes and sleevehead.



KK334 ZIPPED SWEATSHIRT



- Navy 
- Dark Grey 
- Black 



SIZES: XS - 2XL See page 41 for full size spec and European sizing.

FABRIC: 80% cotton 20% polyester.

WEIGHT: 280gsm.

FEATURES: Self fabric full needle rib double layered cuff and welt. Doubled layered collar. Binding to back neck. Taped shoulders. Double stitched shoulders and armholes. Brushed silver coloured metal zip and puller. Double stitched welted side pockets with self fabric pocket bags. Taped zip reverse.

KK902 MICRO FLEECE



- Navy 
- Black 



SIZES: XS - 3XL See page 41 for full size spec and European sizing.

FABRIC: 100% anti pil micro fleece polyester.

WEIGHT: 220gsm.

FEATURES: Anti pil fabric. Binding to back neck. Taped shoulders. Two zippered side pockets with self fabric pocket bags. Self colour metal zips to centre and side pockets. Double layered collar. Cover seam detail to shoulder and collar. Cover seam detailing to front panel. Twin needle cuff and welt.

TECHNICAL INFORMATION

Ever wanted to know how to measure yourself correctly or what exactly is the best way to remove red wine from your favourite shirt? You'll find the answers to these questions and quite a few others right here...

Caring for your Kustom Kit garment - all you need to know (and perhaps a little bit more!) on how to preserve the look, feel, fit and wear of your Kustom Kit garment.

GARMENT FIBRE PROPERTIES

Cotton: Absorbent, strong, washes well with care.

Lycra® & Elastane: High stretch recovery with good shape retention.

Polyester: Durable, easy care, good shape retention.

WASHING

Always look for the garment care label and follow the washing instructions. Washing machines, powders and fabrics are specially manufactured to ensure that when washed at the right temperature your clothes will come out looking their best time after time.

The washtub symbol tells you the washing process to be used.

 60° Washing Symbol Spin Cotton Cycle

 60° Washing Symbol Spin Synthetic Cycle

 40° Washing Symbol Spin Cotton Cycle

 40° Washing Symbol Spin Synthetic Cycle




- Before washing, close all zips, undo buttons and flatten out collars and cuffs. Check pockets and linings for loose or sharp objects.
- Turn garments inside out to reduce abrasion so avoiding contamination by fibres from other garments during the wash cycle.
- Always read the label for correct washing temperature.
- Do not overload the washing machine.
- Always use the correct amount of detergent depending on how dirty the garments are.
- Check garments regularly for marks or stains and remove as soon as possible. See our Stain Removal guide.

DRYING

Always check the care label to see if a garment can be tumble dried. When tumble drying the following is recommended:

Garment Type	Drying Time
Cotton	50-100 minutes
Cotton Polyester	35-55 minutes
Heavy Synthetics	45-65 minutes
Light Synthetics	30-40 minutes

In cases where tumble drying is not appropriate, there will often be alternative drying methods suggested such as dry flat or drip dry.

-  Do not tumble dry
-  Dry flat - Re-shape whilst damp
-  Drip dry

- Re-shape whilst damp, by gathering the hem in one hand, holding the shoulders in the other and pulling back into shape.
- When line drying shirts or jackets, always hang from the tail.
- When line drying knitted garments, always fold over the line and position pegs at the under arm.
- When line drying trousers or skirts, always hang from the waist.
- Do not leave clothes exposed to the sun after they have dried.
- Avoid drying garments on radiators or intense heat as this could distort the shape.

IRONING

The iron symbols advise the optimum temperature at which to iron. The dots represent the recommended iron temperature - the more dots the hotter the iron.

 Iron symbol with one dot - up to 110° (Cool)

 Iron symbol with two dots - up to 150° (Warm)

 Iron symbol with three dots - up to 200° (Hot)

 Do Not Iron symbol - Do not Iron. Steam treatment not recommended.

- Iron each garment on recommended setting as per the care label.
- Do not iron directly onto a printed logo. Always iron on the reverse.
- When ironing dark garments avoid 'iron shine' by either pressing on the inside of the fabric or through a damp cloth. This is not applicable if using a steam iron.
- Do not iron over buttons, try to press around them. If you do break one, an extra is included on the care label.

STAIN REMOVAL

Most stains can be removed by soaking in cold water as long as the fabric is washable, but as with all stains, prompt attention is important. Do not use hot water to rinse the stain as it may cause it to set. Place the stain to be removed over an absorbent cloth or wad of kitchen paper. In order to avoid a ring, first target the area around the stain and then work towards the centre, preventing it from spreading into the fabric.

Always test the removal method on a hidden part of the garment first to ensure that it does not harm the fabric.

Ball point pen: Apply methylated spirit or glycerine sparingly and mop up any loose colour. Rub any remaining stain with detergent and wash as per the care label.

Blood, gravy, ice-cream, egg, chocolate: Soak the stain in cold water and salt or in warm soapy water and then wash immediately as per the care label.

Coffee & tea: Soak up liquid with an absorbent cloth and sponge with warm water. Rinse with cold water and wash as per the care label.

Fat, grease & oils: Remove as much of the deposit as possible and work in neat washing up liquid with fingers. Treat with warm water and then wash immediately as per the care label.

Make-up: Do not rub the stain. Pat with talcum powder to soak up any grease and then work in neat washing up liquid with fingers before washing.

Perspiration: Sponge with weak solution of water and vinegar then rinse. Launder as per the care label.

Beer & spirits: Rinse or soak the stain in luke warm water and then launder in heavy duty detergent as per the care label.

White wine: Rinse the stain in warm water then soak in a warm detergent solution.

Red wine: First soak the stained area immediately in white wine or soda water to remove the colour, then launder as per the care label.

COMMON WASH PROBLEMS

Shrinkage: The major factors contributing to shrinkage are heat and excessive agitation. Do not wash at too high a temperature. Always wash on the most appropriate cycle and follow the care instructions.

Pilling & bobbling: Abrasion and lack of regular washing cause fibre balls to appear on the surface of the fabric. Remove by carefully brushing or picking off.

Fading in sunlight: Sunlight can be very harmful to fabrics and the effects are irreversible. Reduce exposure to direct sunlight wherever possible. Colour staining: Always wash similar colours together. Never leave damp garments together for any length of time.

MEASURING GUIDES

MEN'S UK

To fit	XXS	XS	-	S	-	M	-	L	-	XL	-	2XL	-	3XL	4XL	5XL	6XL	7XL
Collar inches	-	-	14	14.5	15	15.5	16	16.5	17	17.5	18	18.5	19	19.5	20	21	22	23
Collar cms	-	-	36	37	38	39-40	41	42	43	44	45-46	47	48	49-50	51	53-54	56	58-59
Chest inches	28-30	32-34	35	36-38	39	40	41	42	43	44	45	46-48	49	50-52	54-56	58-60	62-64	66-68

Trousers

Waist inches	28	30	32	34	36	38	40	42	44	46
Waist cms	71	76	81	86	91	96	101	107	112	117
European	44	46	48	50	52	54	56	58	60	62

All trouser waist sizes are available in short, regular and long leg lengths

Leg lengths	Short	Regular	Long
inches	30	32	34
cms	76	81	86

Shorts & Pants

	XXS	XS	-	S	-	M	-	L	-	XL	-	2XL	-	3XL	4XL	5XL	6XL	7XL
Waist inches	23-25	26-28	-	29-31	-	32-34	-	35-36	-	37-38	-	39-40	-	-	-	-	-	-
Waist cms	58-63	66-71	-	74-79	-	81-86	-	89-91	-	94-96	-	99-101	-	-	-	-	-	-

MEN'S EUROPEAN

To fit	XXS	XS	-	S	-	M	-	L	-	XL	-	2XL	-	3XL	4XL	5XL	6XL	7XL
Collar inches	-	-	14	14.5	15	15.5	16	16.5	17	17.5	18	18.5	19	19.5	20	21	22	23
Collar cms	-	-	36	37	38	39-40	41	42	43	44	45-46	47	48	49-50	51	53-54	56	58-59
Chest inches	28-30	32-34	35	36-38	39	40	41	42	43	44	45	46-48	49	50-52	54-56	58-60	62-64	66-68
Chest cms	71-76	81-86	89	92-97	99	102	104	107	109	112	114	117-122	124	127-132	137-142	147-152	157-162	168-173
European	38-40	42-44	-	46-48	49	50	51	52	53	54	55	56-58	59	60-62	64-66	68-70	72-74	76-78
Waist inches	23-25	26-28	-	29-31	-	32-34	-	35-36	-	37-38	-	39-40	-	-	-	-	-	-
Waist cms	58-63	66-71	-	74-79	-	81-86	-	89-91	-	94-96	-	99-101	-	-	-	-	-	-

Collar - Measure around the base of the neck whilst keeping one finger between the tape and the neck.

Chest - Measure around the fullest part of your chest keeping the tape under the upper arms and around the shoulder blades.

WOMEN'S UK

To fit	6	8	10	12	14	16	18	20	22	24	26	28
UK	XXS	XS	S	M	L	XL	2XL	3XL	4XL	5XL	6XL	7XL
Bust inches	28	30	32	34	36	38	40	42	44	46	48	50
Bust cms	71	76	81	86	91	96	102	107	112	117	122	127
Waist inches	21	23	25	27	29	31	33	-	-	-	-	-
Waist cms	54	59	64	69	74	79	84	-	-	-	-	-

WOMEN'S EUROPEAN

To fit	XXS	XS	S	M	L	XL	2XL	3XL	4XL	5XL	6XL	7XL
Europe	32	34	36	38	40	42	44	46	48	50	52	54
France/Spain	34	36	38	40	42	44	46	48	50	52	54	56
Italy	38	40	42	44	46	48	50	52	54	56	58	60
Bust inches	28	30	32	34	36	38	40	42	44	46	48	50
Bust cms	71	76	81	86	91	96	102	107	112	117	122	127

KIDS

Age	3-4	5-6	7-8	9-10	11-12	13-14
Chest inches	22	24	26	28	30	32-34
Chest cms	56	61	66	71	76	81-86
Height cms	104	116	128	140	152	164
Waist inches	21	22	24	26	28	30
Waist cms	54	56	61	66	71	76

PRODUCT SPECIFICATION SHEETS

Due to the variety of different fits across the Kustom Kit range, we encourage our customers to examine individual product specification sheets in order to establish precise measurements for each garment.

These sheets are available to download from the respective product pages at www.kustomkit.com and provide a comprehensive overview of measurements including actual chest, length and sleeve length along with a product description, ethical accreditation and care instructions.

HOW WE MEASURE UP

PROVIDING UNIFORMITY WHILST CATERING FOR THE INDIVIDUAL

We understand that everybody is different, which is why we provide such a diverse range of fits and sizes across our collections to ensure that the whole team look and feel great. Here's our guide explaining the various fits we offer to help you select your perfect Kustom Kit garment.

GENERAL FIT INFORMATION

Our non-shirting styles comprise of the following cross-section of fits as denoted on the individual product pages...



CLASSIC FIT

A traditional forgiving silhouette allowing ease of movement.



REGULAR FIT

True to size. A neater more contemporary fit without being restrictive.



SLIM FIT

Close fitting throughout the body and sleeve.



FASHION FIT

Body skimming fashion led styling.

SHIRT FIT INFORMATION

Our corporate shirt collection is one of the most diverse in the market. We've created a range that empowers teams to feel smart in any business environment whilst catering for individual preferences. In order to achieve this we've continually developed our choice of fits to provide enhanced wearer satisfaction. The following guide will help you understand the design of each fit in order to help you find your ideal shirt.

WHAT'S MY SIZE?

To decide on the best fit for you, it's important to know your measurements. Firstly measure your chest around the fullest part and refer to our measuring guide. Next measure your collar, around the base of your neck whilst keeping your index finger between the tape and your neck, again refer to the measuring guide. The measuring guide is in actual body measurements not garment measurements, so if your chest measures 43"/109cms and your collar measures 17"/43cms we recommend that you take a 17" collar Kustom Kit shirt.

WHAT IF I'M IN BETWEEN SIZES

This will depend on how you like to wear your shirts. Classic shirts are cut more generously so will be more forgiving if you size down. Slim fit shirts however are neatly cut so we would recommend sizing up if you are between sizes.

MY COLLAR SIZE IS DIFFERENT TO MY CHEST SIZE

If you intend to wear a tie we recommend buying to your collar size measurement to ensure a neat and comfortable fit. Choose a classic fit if you use your collar size and a slim fit if you use your chest size. If you intend to wear the top button open then you should fit your shirt to your chest rather than your collar measurement.

STILL UNSURE?

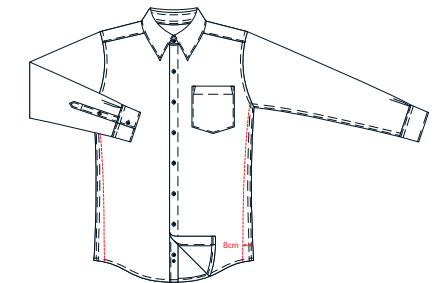
Kustom Kit can provide size charts for all garments upon request and our Customer Services team will be happy to answer any queries that you may have.

WHAT'S MY FIT?

We offer 3 different shirt fits



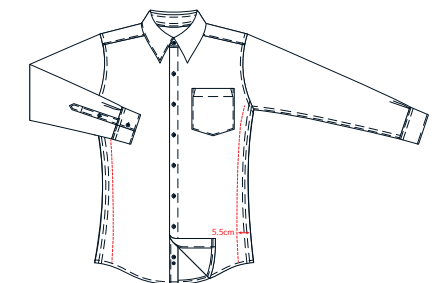
CLASSIC FIT



A traditional silhouette featuring straight side seams and a more generous fit across the chest, waist and sleeves. Cut with a long shirt tail that stays tucked in and wide armholes for ease of movement. Our classic shirts will have either side pleats or a central pleat to the back yoke for a non restrictive and comfortable fit. As a guide based on a 17" collar shirt the actual chest measurement will be 16cms larger than your actual chest and 32cms larger than your actual waist. Sounds a lot? Not really when you consider these measurements in a 3 dimensional context, refer to the illustration above.



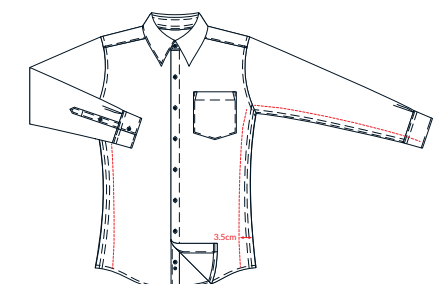
TAILORED FIT



Our tailored fit shirts are just that! Tailored through out the body and sleeve for a closer fit that is both smart and contemporary. We taper the waist to ensure a clean silhouette while retaining an unrestricting garment shape. As a guide based on a 17" collar shirt the garment chest measurement will be 12cms larger than your actual chest and 22cms larger than your actual waist.



SLIM FIT



Our closest fitting shirt is tailored through the body and sleeve. For a sleek appearance we taper the waist and add darts to the back. We keep the cut narrow at the shoulder and lift the armhole to enhance the modern slim silhouette. The result is a surprisingly flattering wearable garment that suits all. As a guide based on a 17" collar shirt the garment chest measurement will be 12cms larger than your actual chest and 14cms larger than your actual waist. **Stretch Fit:** Our slim-stretch shirts combine an ultra-sleek fit with a touch of elasticity to enable full range of movement whilst retaining the unmistakable feel of a Kustom Kit shirt.



KUSTOM KIT®

KUSTOMKIT.COM